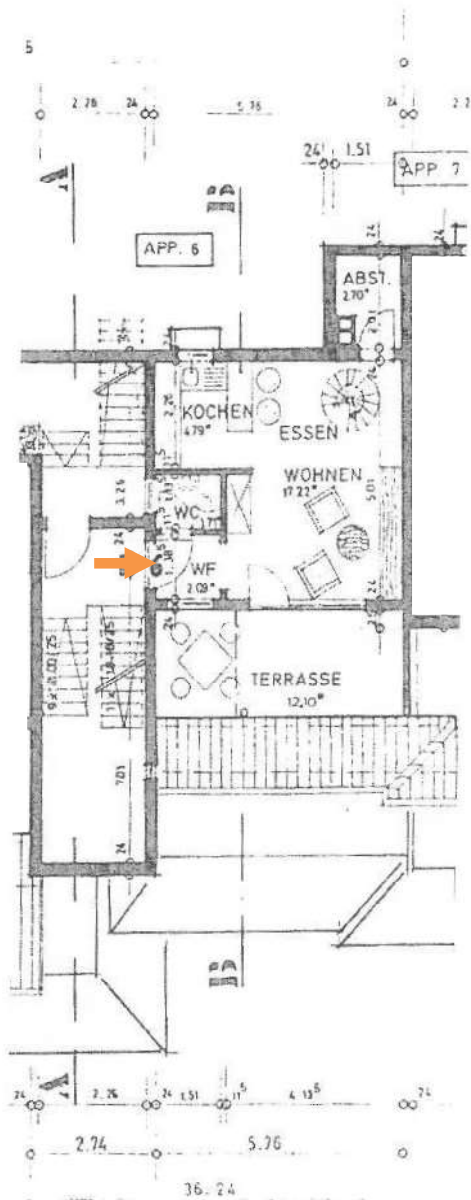
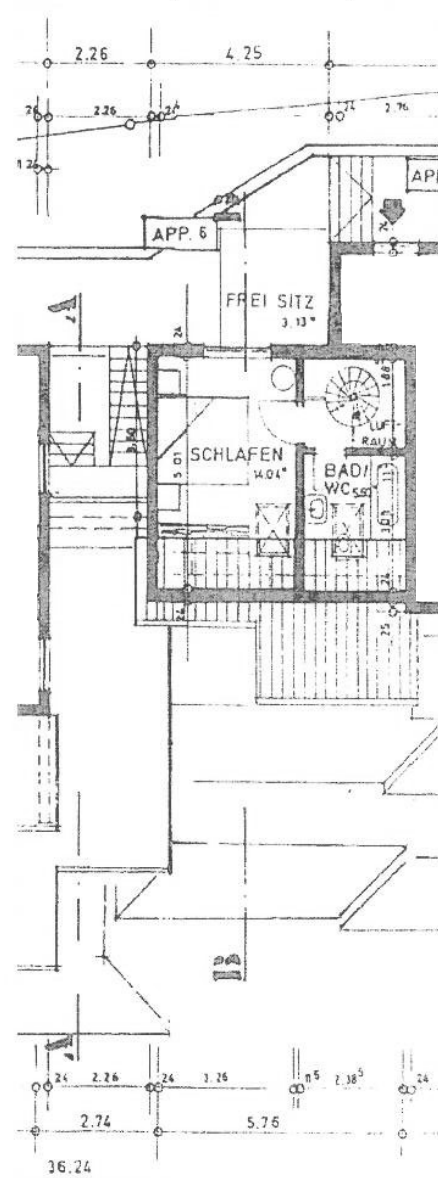


GW.179 - Interne Objektnummer ••• 2 Zi. Whg. ••• 75365 Calw-Hirsau
Grundriss Obergeschoss und Dachgeschoss



Obergeschoss



Dachgeschoss

GW.179 - Interne Objektnummer ... 2 Zi. Whg. ... 75365 Calw-Hirsau
Wohnflächenberechnung

Appartement 6					
Wohnen					
	1 x	4.135x	2.635 =	10.90	
	+ 1 x	2.375x	3.635 =	8.64	
	./.	1 x 3.14 x	0.42 =	1.32	
	./.	1 x 1.00 x	1.00 =	1.00	= 17.22 qm
Schlafen	1 x	3.26 x	3.60 =	11.74	
	+ 1/2 x	3.26 x	1.41 =	2.30	= 14.04 qm
Kochen/Essen	1 x	2.26 x	2.12 =		4.79 qm
Windfang	1 x	1.51 x	1.385 =		2.09 qm
WC	1 x	1.135x	1.51 =		1.71 qm
Abstellen	1 x	1.51 x	2.00 =	3.02	
	./.	1 x 0.70 x	0.45 =	0.32	= 2.70 qm
Bad/WC	1 x	2.385x	1.60 =	3.82	
	+ 1/2 x	2.385x	1.41 =	1.68	= 5.50 qm
Terrasse	1/2 x	2.10 x	5.76 =		6.05 qm
					<u>54.10 qm</u>
./.					1.62 qm
					<u>52.48 qm</u>
./.					
3% Putz					
Wohnfläche Appartement 6					